

# NUMERICAL STUDY ON MECHANICAL PROPERTIES OF STENTS

WITH DIFFERENT MATERIALS DURING STENT DEPLOYMENT WITH BALLOON EXPANSION

PRANAB GHOSH<sup>1</sup>, KRITTIKA DASGUPTA<sup>1</sup>, ABHIJIT CHANDA<sup>1,2</sup>, DEBABRATA NAG<sup>2</sup>

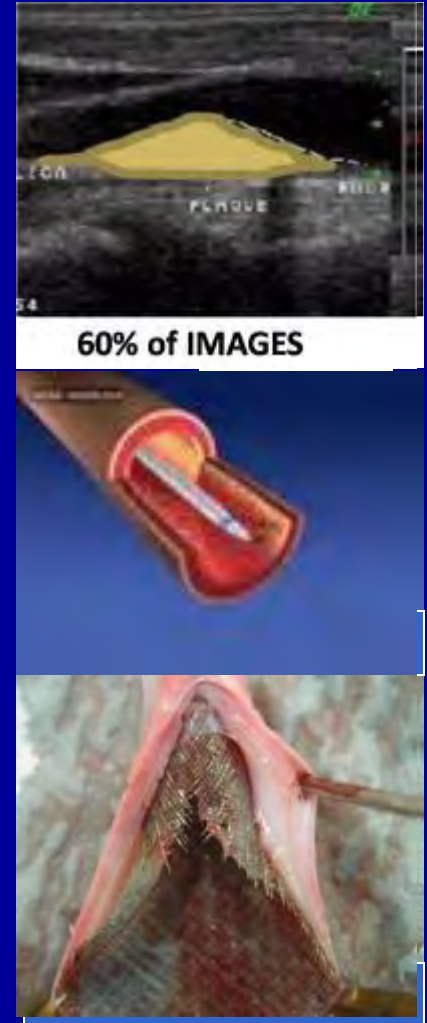
<sup>1</sup>SCHOOL OF BIOSCIENCE AND ENGINEERING, JADAVPUR UNIVERSITY

<sup>2</sup>DEPARTMENT OF MECHANICAL ENGINEERING, JADAVPUR UNIVERSITY



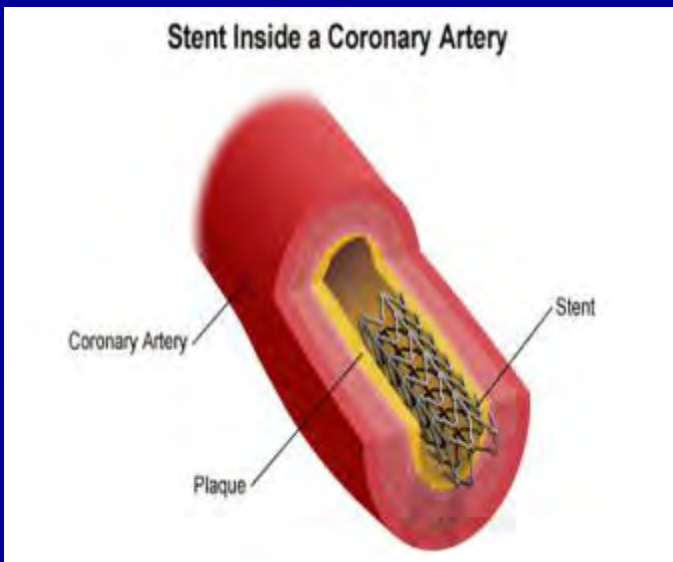
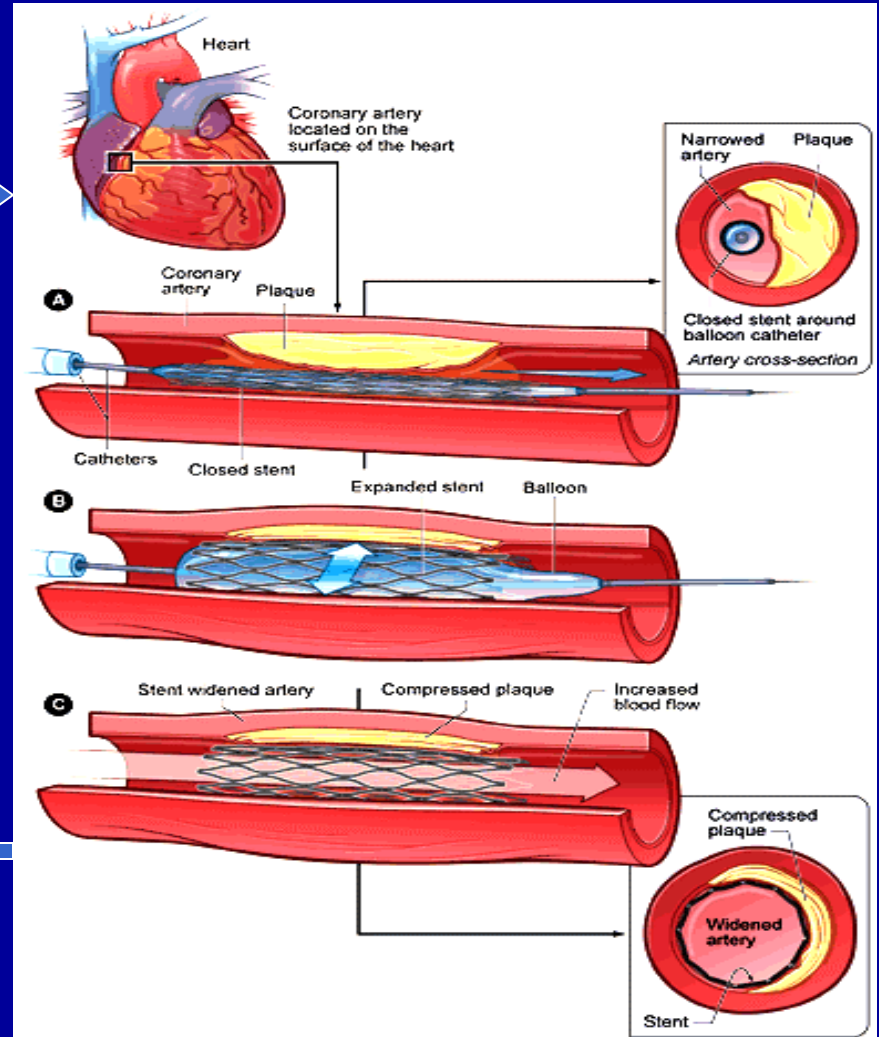
# Balloon Expandable Stent

- Percutaneous transluminal coronary angioplasty (PTCA) is a wide spread method for treatment of coronary artery disease
- Balloon expandable stents are preferable in treatment of coronary artery stenosis
- Coronary stents are smooth metallic mesh like structures
- Stents can be either in tubular or in coil shape
- Stents are deployed inside arteries with balloon expander
- Balloon is inflated to expand the stent till it reaches to artery wall
- Finally, balloon is removed, and expanded stent continues to provide mechanical support to the artery wall





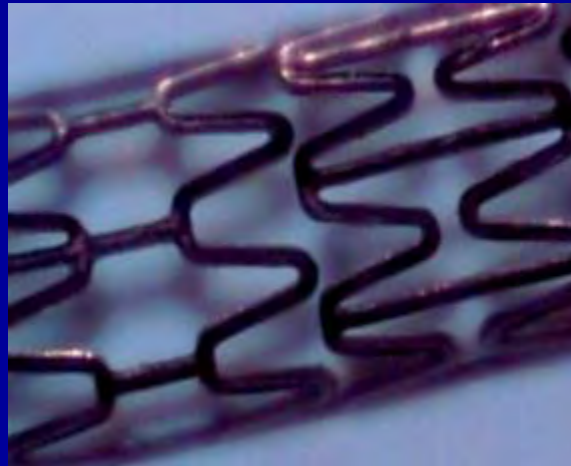
# Coronary Stents



# Different Types of Stents



A



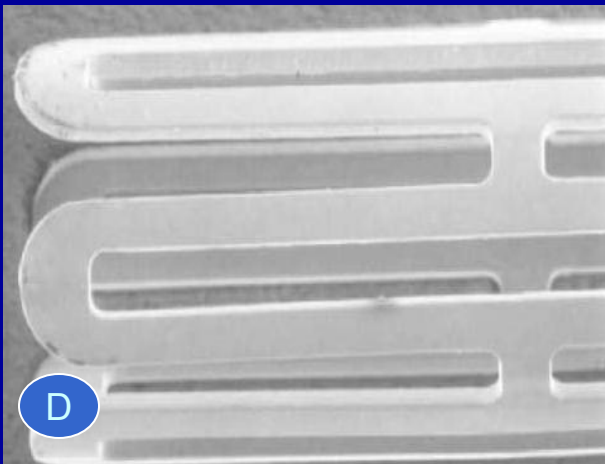
Clockwise from Top  
Left:

**A. Tubular Mesh**

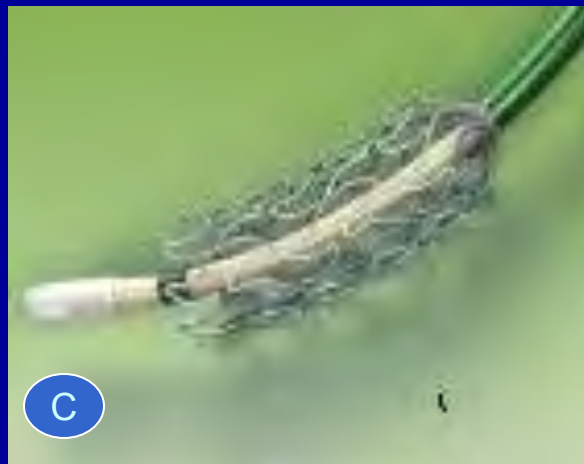
**B. Tubular wire**

**C. Coil**

**D. Hollow slotted tube  
with open and  
closed struts**



D



C

# Stent Materials Used in the Model

- 4 sample stents with different materials are used
- All stents have same geometrical properties
- Same initial deployment pressure applied to all stent
- Materials are chosen which are commonly used in today's stent manufacturing.
- stent materials :
  1. Stainless steel 316 L Annealed
  2. Nitinol (austenite) – (55% nickel, 45% titanium)
  3. Elgiloy (heat treated at 525 c) – 15.5Ni, 2Mn, 1Be, 0.15C, balance Fe
  4. Tantalum (Pure)



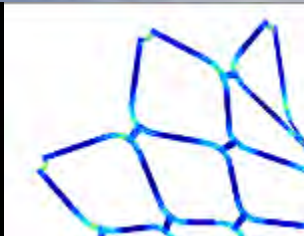
# Stent Materials Properties



Metal	Composition, wt%	Elastic modulus, GPa (Msi)	Tensile strength $\sigma_e$ , MPa (ksi)	Ultimate tensile strength $\sigma_{UT}$ , MPa (ksi)	Elongation, %	Poisson's ratio	Yield Strength (Mpa)	Isentropic hardness modulus (GPA)	Density (kg/m <sup>3</sup> )
316 L Stainless Steel, Annealed	17Cr, 12Ni, 2.5 Mo, <0.03C, balance Fe	193 (28)	260 (38)	550 (80)	50	0.3	300	2	7850
Nitinol (Austenite)	55 Ni - 45 Ti	83 (12)	195 to 690 (28 to 100)	960	25 to 50	0.3	560	1	6478
Tantalum	Pure	185 (27)	165 (24)	205 (30)	40	0.35	170		1669
Co-Cr-Mo Alloy (Elgiloy) Heat treated at 525 c for 5 hours	40Co, 20 Cr, 7Mo, 15.5Ni, 2Mn, 1Be, 0.15C, balance Fe	190 (28)	690 (100)	1020 (148)	38	0.226	520		8300

# MODELLING USING COMSOL

- VERSION: COMSOL 3.5a
- STRUCTURAL MECHANICS MODULE
- Solid Stress-Strain
- Static analysis, elasto-plastic material model



COMSOL  
MULTIPHYSICS

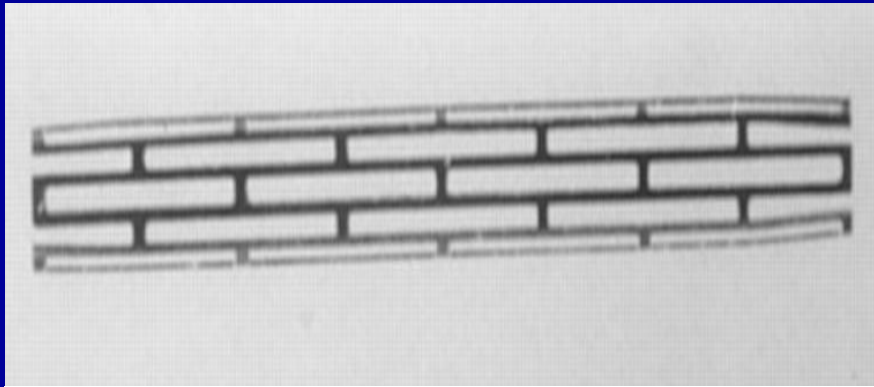
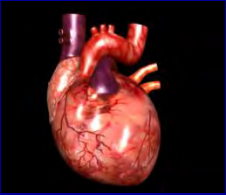


# Theoretical Background

- The Structural Mechanics model
  - Current model uses Solid Stress Strain application mode
  - it aims to solve for displacement, strain and stress in 3D
- Fundamental Relationships
  - Strain Displacement Relationship
  - Stress Strain Relationship
- Implementation and Analysis
  - Implementation based on weak formulation of the equilibrium equations of stresses
    - $-\nabla \cdot \sigma = \mathbf{F}$  (where  $\sigma$  is the stress tensor)
  - Substituting with the fundamental relationships, Naviers' displacement equation is obtained
  - Analysis types
    - Static
    - Eigenfrequency
    - Transient
- Current model uses static analysis. Solver has been selected accordingly.



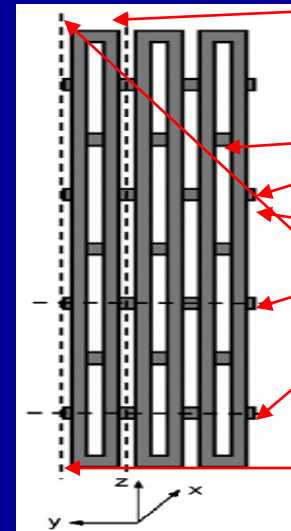
# Model Geometry



Palmaz-Schatz stent: Before deployment



Palmaz-Schatz stent: After deployment  
(Fully expanded )



Identical slots

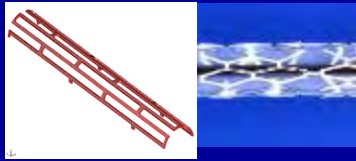
Struts

Symmetry  
Boundary

Free end

Fixed end

- Stent Type: Palmaz Schatz (J&J Cordis®)
- Shape: Hollow slotted tube
- Length: 8 mm
- Diameter: 1.37mm
- Thickness: 0.1mm
- 6 Identical units are linked with struts



# Modeling Parameters

<u>Stent Type</u>	<u>Young modulus</u>	<u>Poisson's Ratio</u>	<u>Ultimate Tensile Strength</u>	<u>Yield Strength</u>	<u>Density</u>	<u>Length</u>	<u>Diameter (Mounted)</u>
Stainless Steel	193	0.3	550	300	7850	8	3.681
Nitinol	83	0.3	960	560	6478	8	1.568
Elgiloy	190	0.226	1020	520	8300	8	1.483
Tantalum	185	0.35	205	170	1669	8	3.681

**Constant Definition:** Young modulus, poisson's ratio, Yield Strength, Isentropic Hardness ratio have been given for different

**Sub-domain setting:** Load, Density have been set up in physics mode, sub-domain setting



# GOVERNING EQUATIONS

## Governing Equations

A normal load applied acting radially outward on stent wall

Equation for load:

Load\_max\*((para<=1)\*para+(para>1)\*(2-para)).

Navier's displacement equation:

$$-\nabla \cdot (c \nabla \mathbf{u}) = \mathbf{F}$$

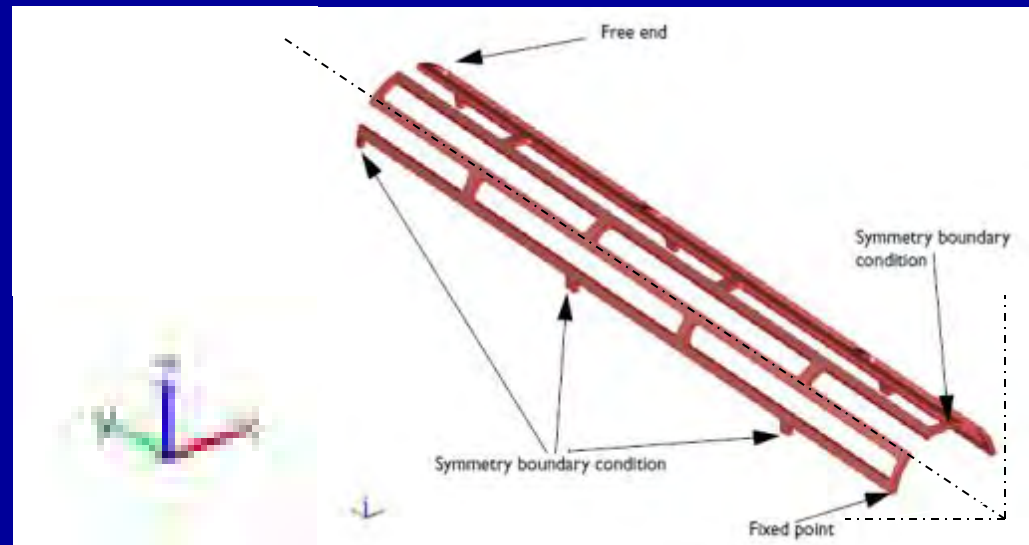
## Load

- From clinical study, it is found that standard 0.3 MPa or 2 atm pressure is applied to inflate the balloon.
- In the study, a radially outward pressure is applied on the inner surface of the stent.
- During loading, pressure is increased with the parametric solver to a maximum value of  $p_{\max} = 0.3$  MPa.
- Followed by decreasing the load to zero to obtain the final shape of the deformed stent

# BOUNDARY CONDITIONS

## Boundary Condition

- Symmetry boundary conditions
- Prevents rigid body translation along y and z direction
- Prevents rotation around all axes
- A point constraint along x direction to prevent rigid body translation along x





# MESH GENERATION

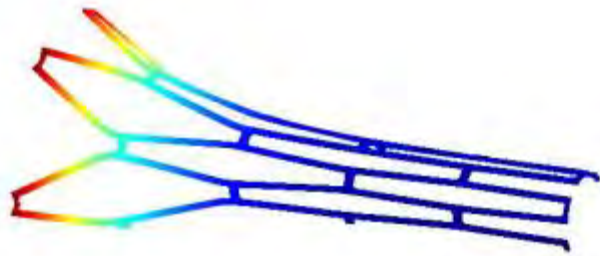


- Predefined fine mesh size has been chosen in Free mesher parameter
- Tetrahedral elements (Lagrangian-Quadratic)
- Approximately 7300 elements generated

# Results

- Outputs
  - Von Mises Stress
  - Diameter deformation in all directions( $u,v,w$ )
  - Integral volumetric deformation ( $u,v,w$ )

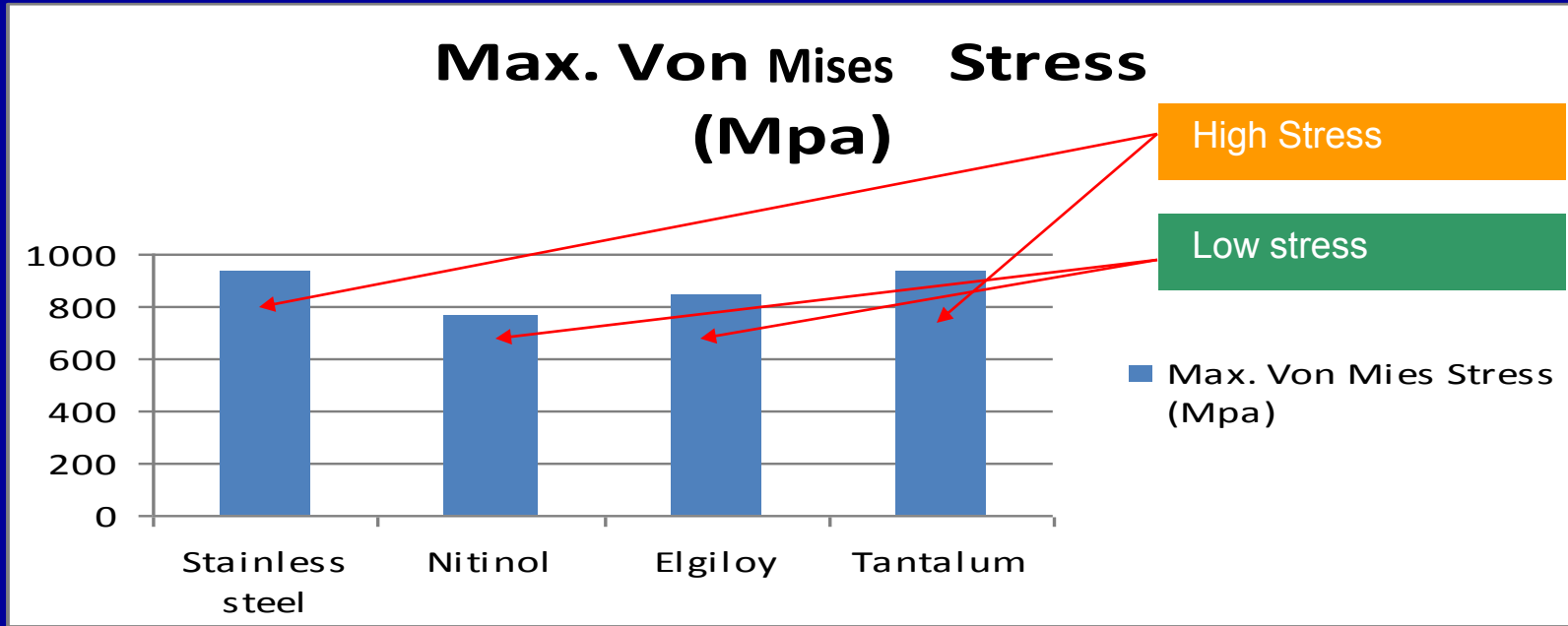
## A Sample Output of Model



- Fully deformed stent after expansion  
(nitinol material)
- Measure: Boundary deformation (Displacement (m))
- Color legend shown at right

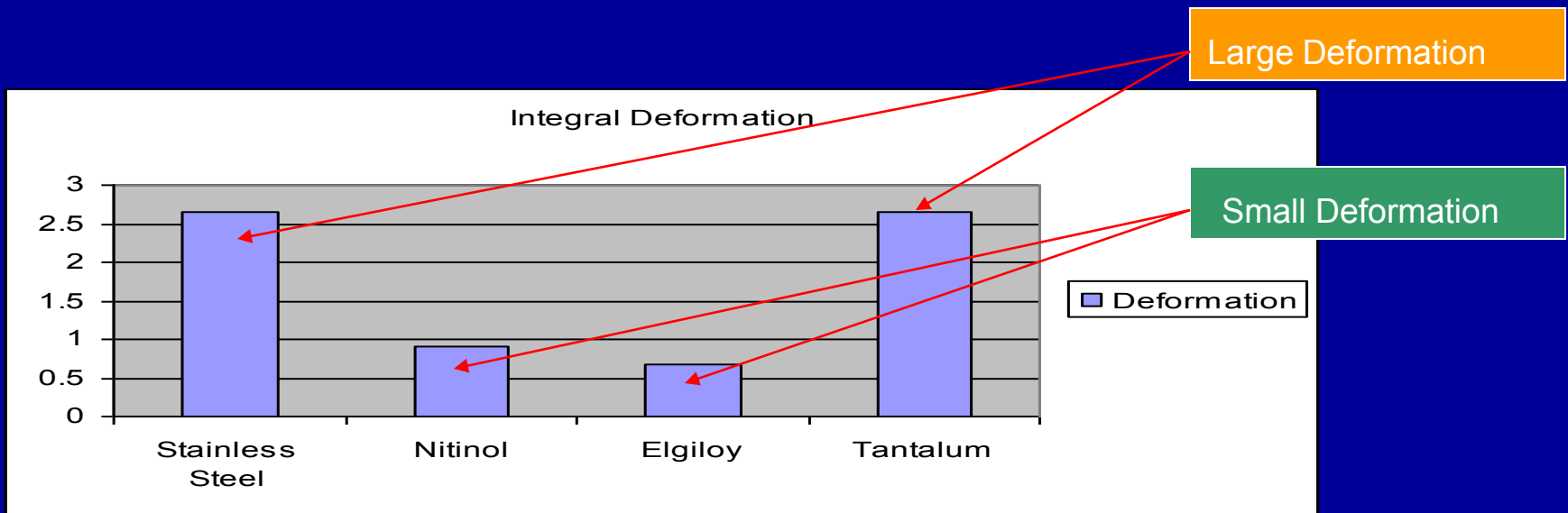


# Comparison of Stress Developed



Sl. No.	Materials	Max. Von Mises Stress (Mpa)	Maximum Displacement (mm)
1	Stainless steel	939.1	3.681
2	Nitinol	762	1.568
3	Elgiloy	847.3	1.483
4	Tantalum	939.1	3.681

# Comparison of Volume Deformation



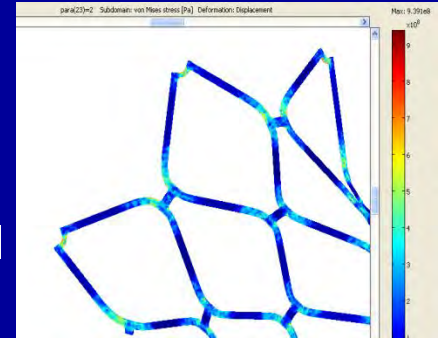
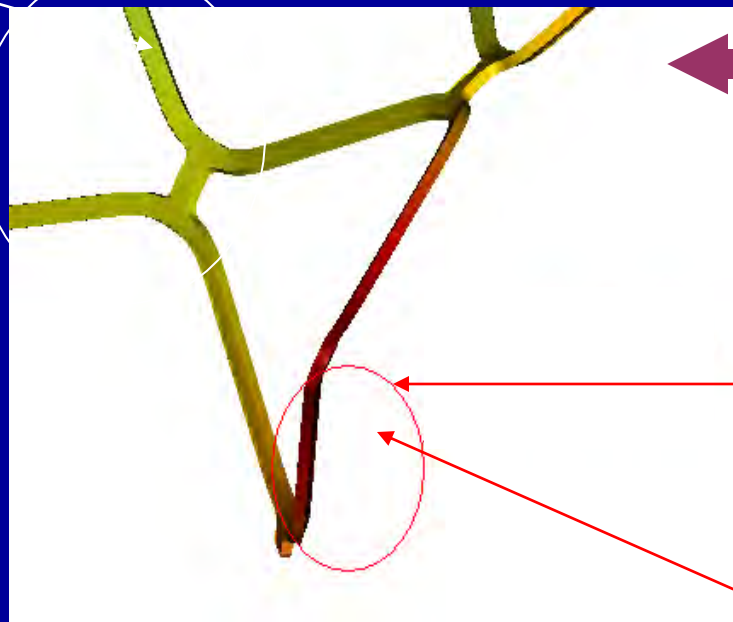
Stent	Stainless Steel	Nitinol	Elgiloy	Tantalum
Deformation	2.64	0.9	0.67	2.64



# Stress and Deformation in Stainless Steel

Minimum Deformation

Low Stress Concentration Region

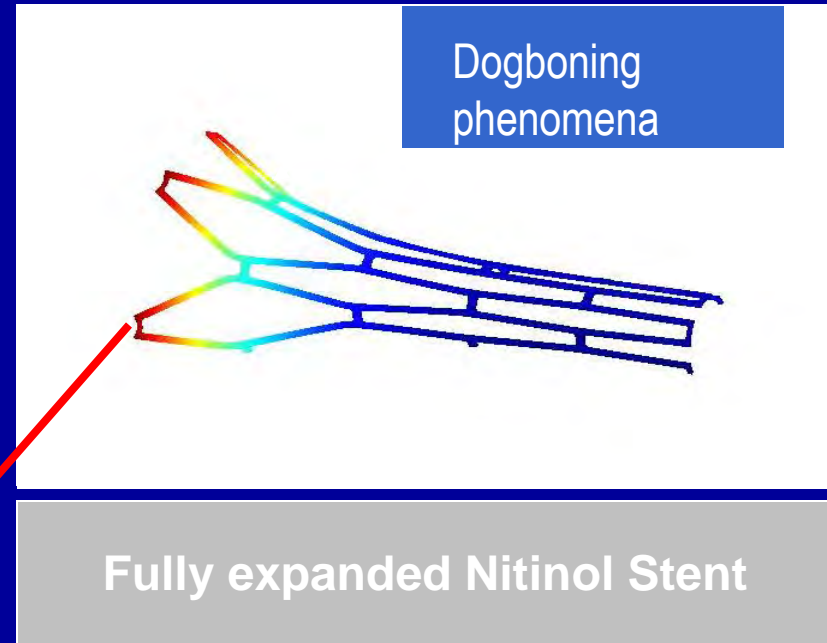
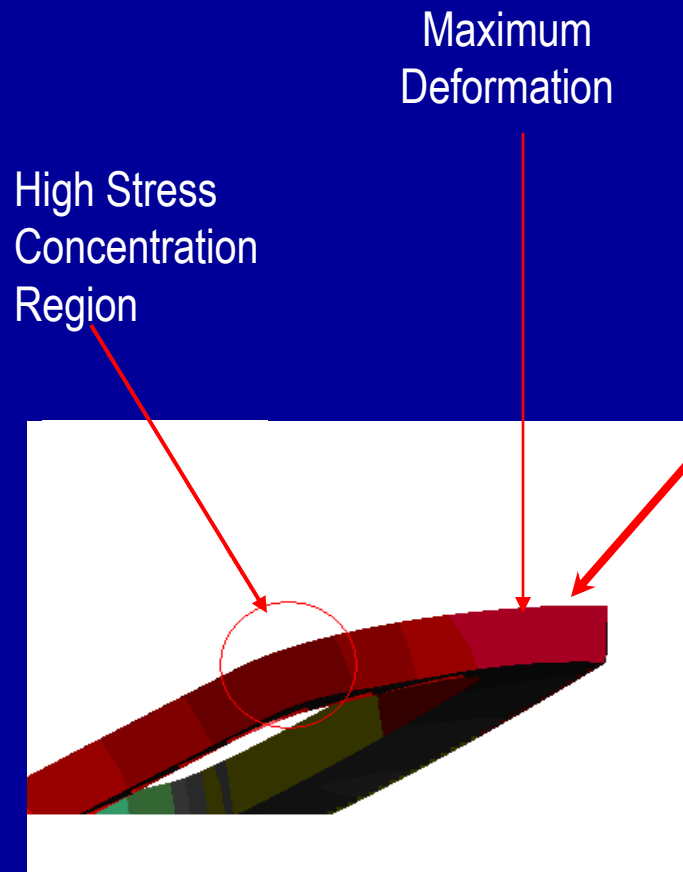


High Stress Concentration Region

Maximum Deformation

Fracture will initiate as stress exceeds the ultimate tensile strength

# Stress and Deformation in Nitinol

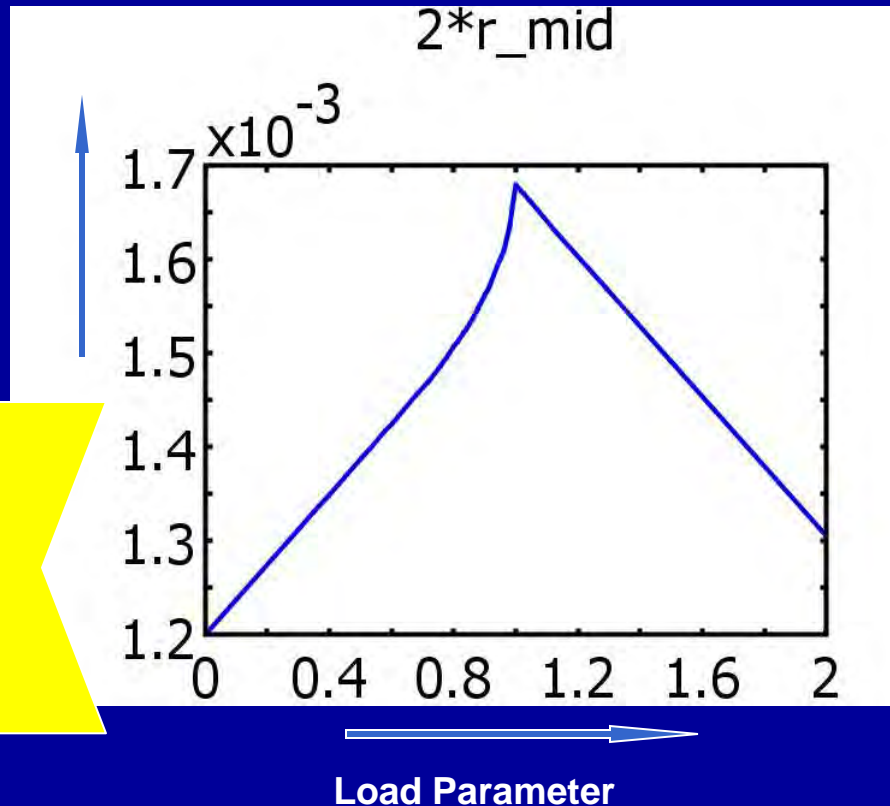


Fracture will not initiate as stress does not exceed the ultimate tensile strength

# Deformation Process Monitoring

Diameter  
Deformation

The plot shows a standard characteristic of mechanical behavior of shape memory alloy Nitinol



Nitinol is preferable as it remain the shape as predefined  
(1.3 mm diameter approx. in this case)

Plot of load parameter vs. radial deformation

# Detailed Deformation Study of Different Stent

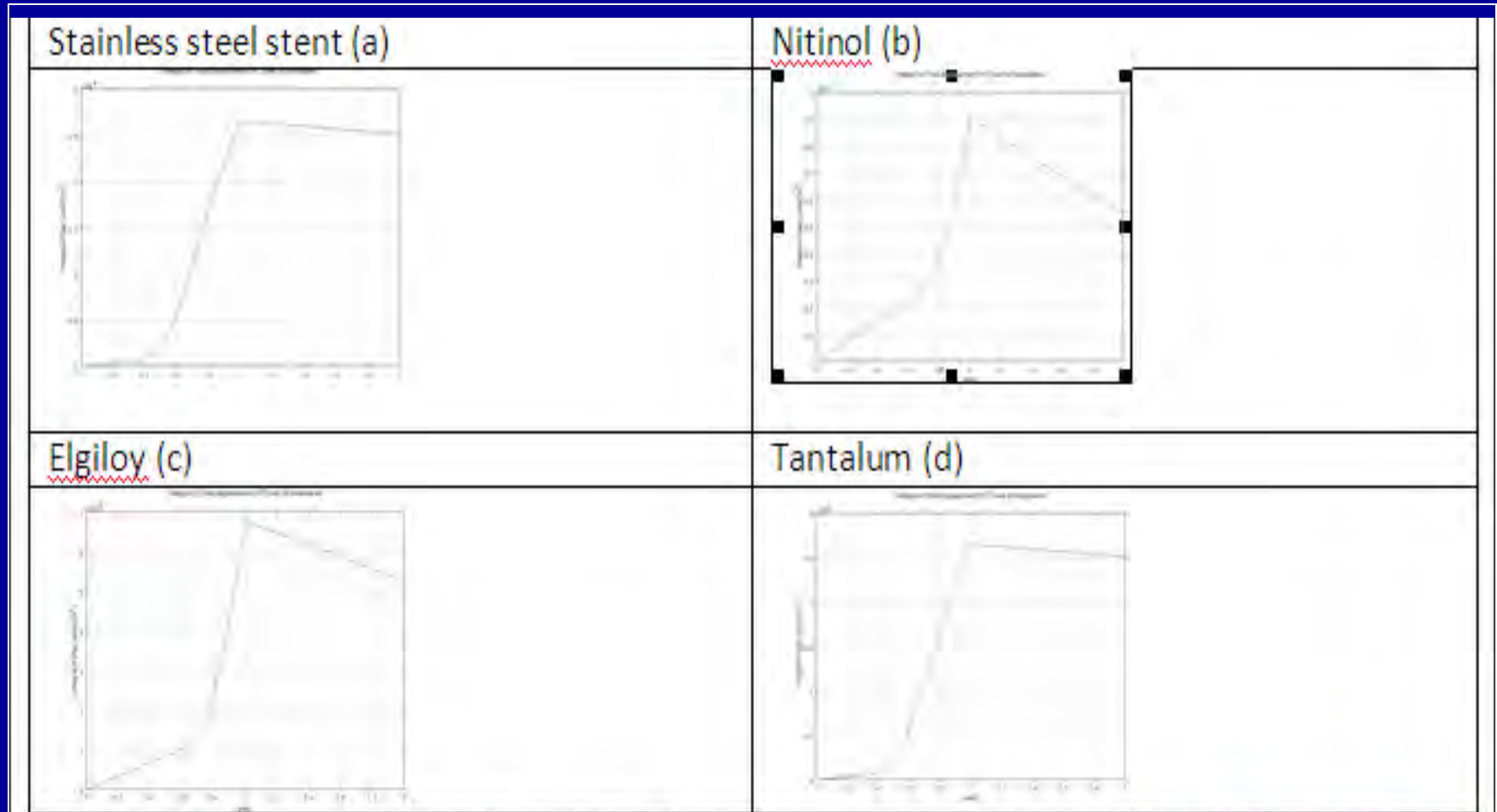


Figure 3: Plot of integrated deformation of stents against parameters – (a) stainless steel, (b) nitinol, (c) elgiloy, (d) tantalum.

# Study of Stress developed and Fractures

Stent Materials	Ultimate Tensile Strength (MPa)	Max. Von Mises stress (MPa)	Will fracture occur?
Stainless steel	550	939.1	Yes
Nitinol	960	762	No
Elgiloy	1020	847.3	No
Tantalum	205	939.1	Yes

- Above comparison shows that fracture risk is there in case of Stainless steel and Tantalum stents.
- In case of nitinol and elgiloy, fracture will not occur as their ultimate tensile stresses are higher than the maximum von Mises stress developed.
- Here, the load on stents and stent geometries are kept constant

# Conclusions

- The study of deformation and stress development during the stent deployment process are important for determining the stent efficacy
- Comparison of different stent materials' mechanical properties during the expansion process is important to decide the preferred material to choose
- The comparison of stress developed during the stent expansion process determines the risk factors of developing fractures inside stents
- The current model results shows that, with constant pressure load on stent wall and constant stent geometry, fracture development risks in nitinol and elgiloy stents are less and that in stainless steel and tantalum are more

# Acknowledgement

- We sincerely acknowledge the help we have got from COMSOL® Multiphysics support and documentation set for successfully developing the numerical analysis model in the present study. A big thank to the Comsol team.
- We specially thank to the entire lab team of Jadavpur University School of Bio Science and Engineering for allowing us to use the lab facilities
- We sincerely thank to the Dept. of Mechanical Engineering, Jadavpur University for the exceptional help in completing this study, especially in theatrical formulation of finite element analysis.
- We sincerely thank to all our colleagues for their kind help and for allowing us to devote extra time in completing the present study

# References

1. J. Levesque et. al., MATERIALS AND PROPERTIES FOR CORONARY STENTS, ADVANCED MATERIALS & PROCESSES, SEPTEMBER 2004, Page 45-48 (2004)
2. Frederique Etave et. al., Mechanical properties of coronary stents determined by using finite element analysis, Journal of Biomechanics, 34, Pages 1065–1075 (2001)
3. Duda S et.al., Physical Properties of Endovascular Stents: An Experimental Comparison. JVIR 11:645 (2003)
4. Josef Hanus and Jiri Zahora, MEASUREMENT OF MECHANICAL PROPERTIES OF STENTS, Proceedings, XVII IMEKO World Congress, TC13, pages 1731-1733 (2003)
5. Stoeckel et. al., Self-Expanding Nitinol Stents - Material and Design Considerations, European Radiology, 2003
6. Jong-Seon Park et.al. Stent fracture and restenosis after zotarolimus-eluting stent implantation, International Journal of cardiology, 147, Pages e29–e31 (2011)
7. Wei Wu et. al., Stent expansion in curved vessel and their interactions: A finite element analysis, Journal of Biomechanics, 40, pages 2580–2585 (2007)
8. Philippe The riault et. al., Finite element modeling of a progressively expanding shape memory stent, Journal of Biomechanics, 39, pages 2837–2844 (2006)
9. COMSOL Multiphysics version 3.5 - Documentation - Structural Mechanics Model Library
10. Zihui Xia et. Al., A general finite element analysis method for balloon expandable stents based on repeated unit cell (RUC) model, Finite Elements in Analysis and Design, 43, Pages 649 – 658 (2007)
11. Adrian James Ling, Stenting for carotid artery stenosis: Fractures, proposed etiology and the need for surveillance, Journal of Vascular Surgery, 47, Pages 1220-1226 (2008)